

Excess Surface Water Available for Non-Riparian use

Excess Surface Water – A.C.A. § 15-22-304

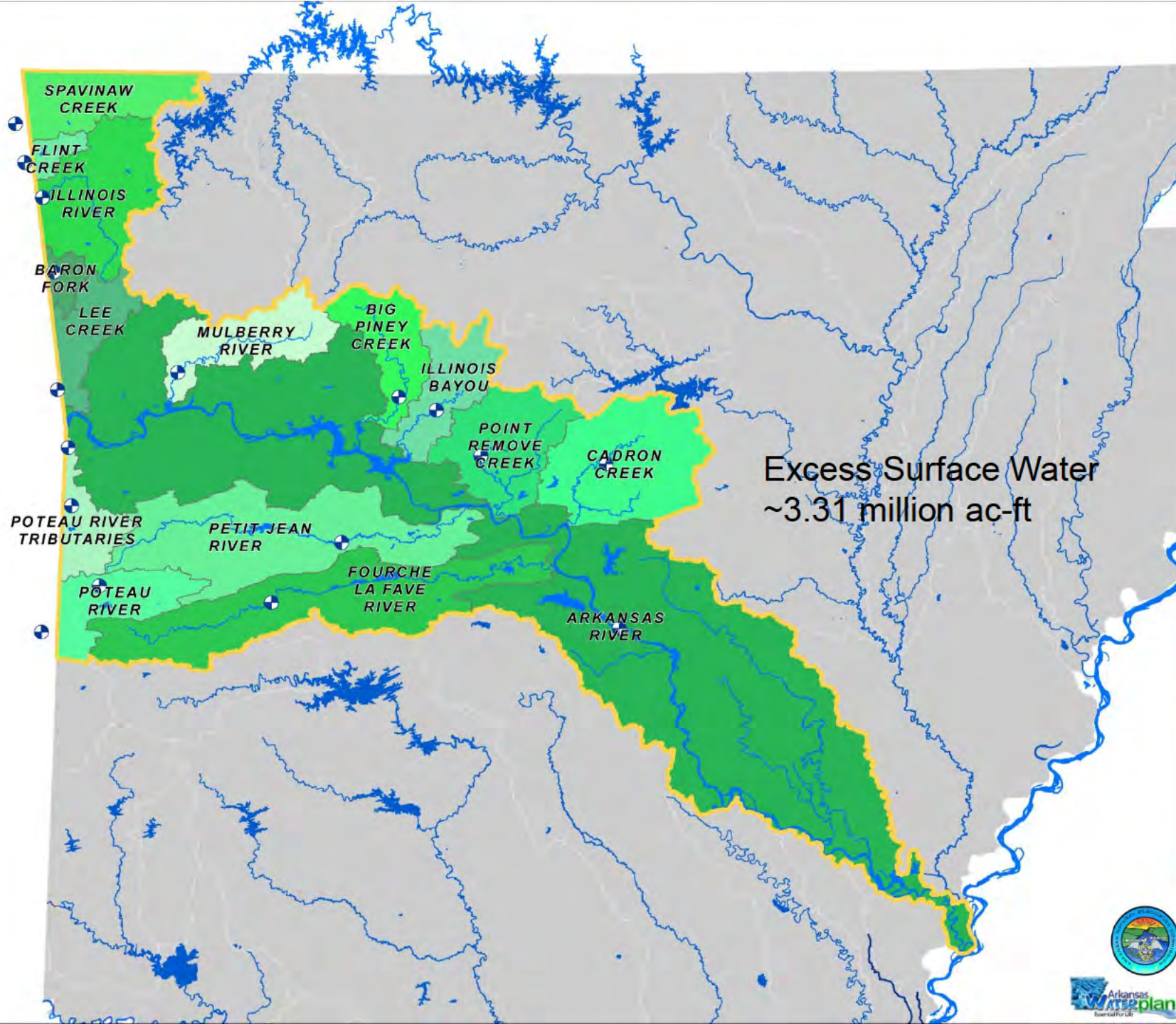
- 25 % of that amount of water available on an average annual basis above the amount required to satisfy existing and projected needs. Needs include:
 - Existing riparian rights as of June 28, 1985
 - The water needs of federal water projects existing on June 28, 1985
 - The firm yield of all reservoirs in existence on June 28, 1985
 - Maintenance of instream flows for fish and wildlife, water quality, aquifer recharge requirements, and navigation
 - Future water needs of the basin of origin as projected in the state water plan

Excess Surface Water Determination

- Started with the 19 gages used in the 1990 Plan
- 1990 Plan determined excess surface water for 8 major areas in the state (not constrained to river basin)
- 51 gages used for current update
- Used updated streamflow data
- Current update includes 9 major river basins and 32 sub-basins
- Incorporated updated, projected demands (developed by Demand Workgroup)-if negative, assumed zero change

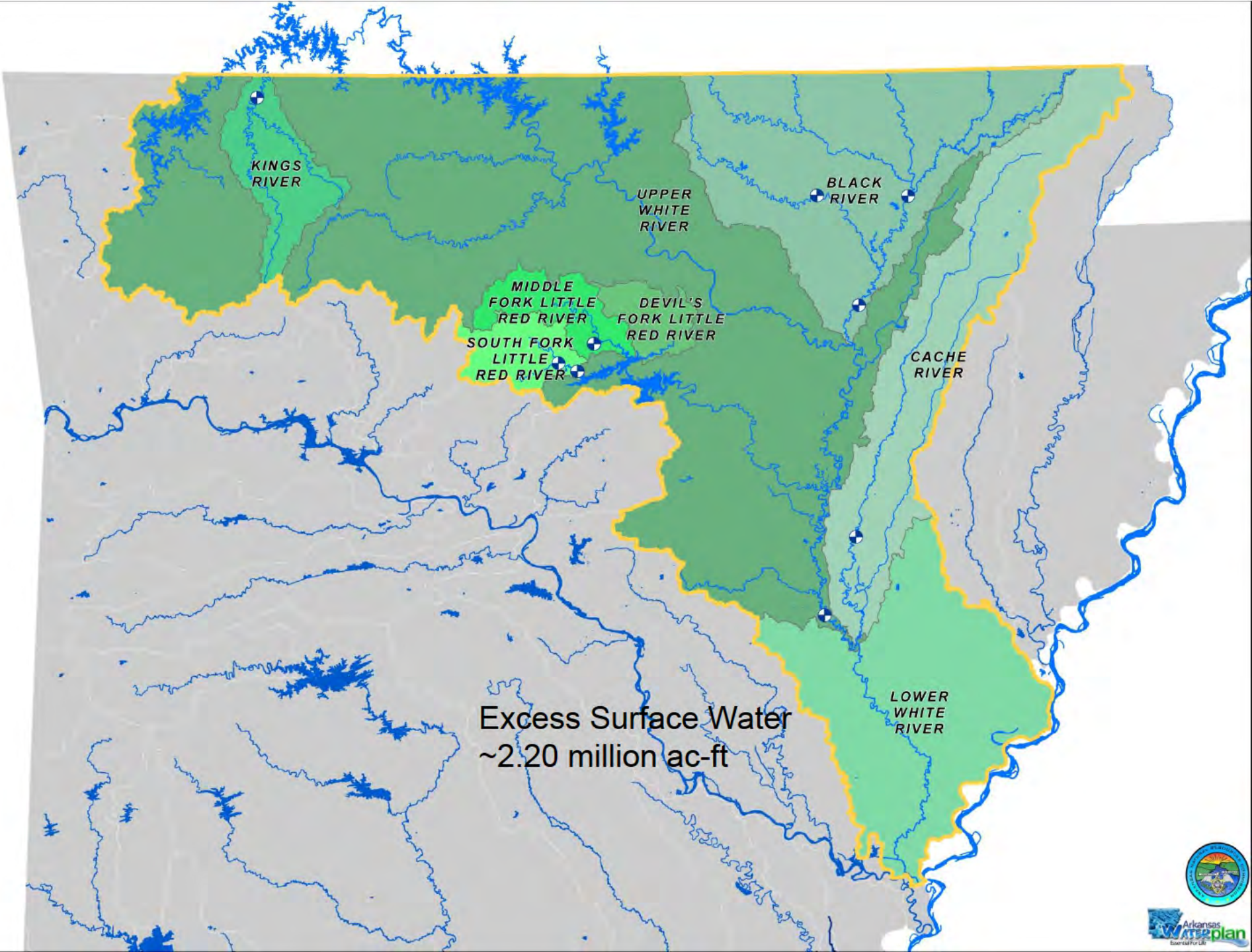
Excess Surface Water Availability Results

- 1990 Statewide total excess surface water ~10.5 million ac-ft
- Updated Statewide total ~8.74 million ac-ft
- Differences result from updated demand projections, changes in in-stream needs (e.g., White River minimum flows), and basin differences (e.g., 1990 East Arkansas methodology)
- Overlay results from groundwater and surface water analyses to characterize total water supply availability
- Results to be used in conjunction with demand projections to identify areas with an excess or deficiency



Excess Surface Water
~3.31 million ac-ft





KINGS RIVER

UPPER WHITE RIVER

BLACK RIVER

MIDDLE FORK LITTLE RED RIVER

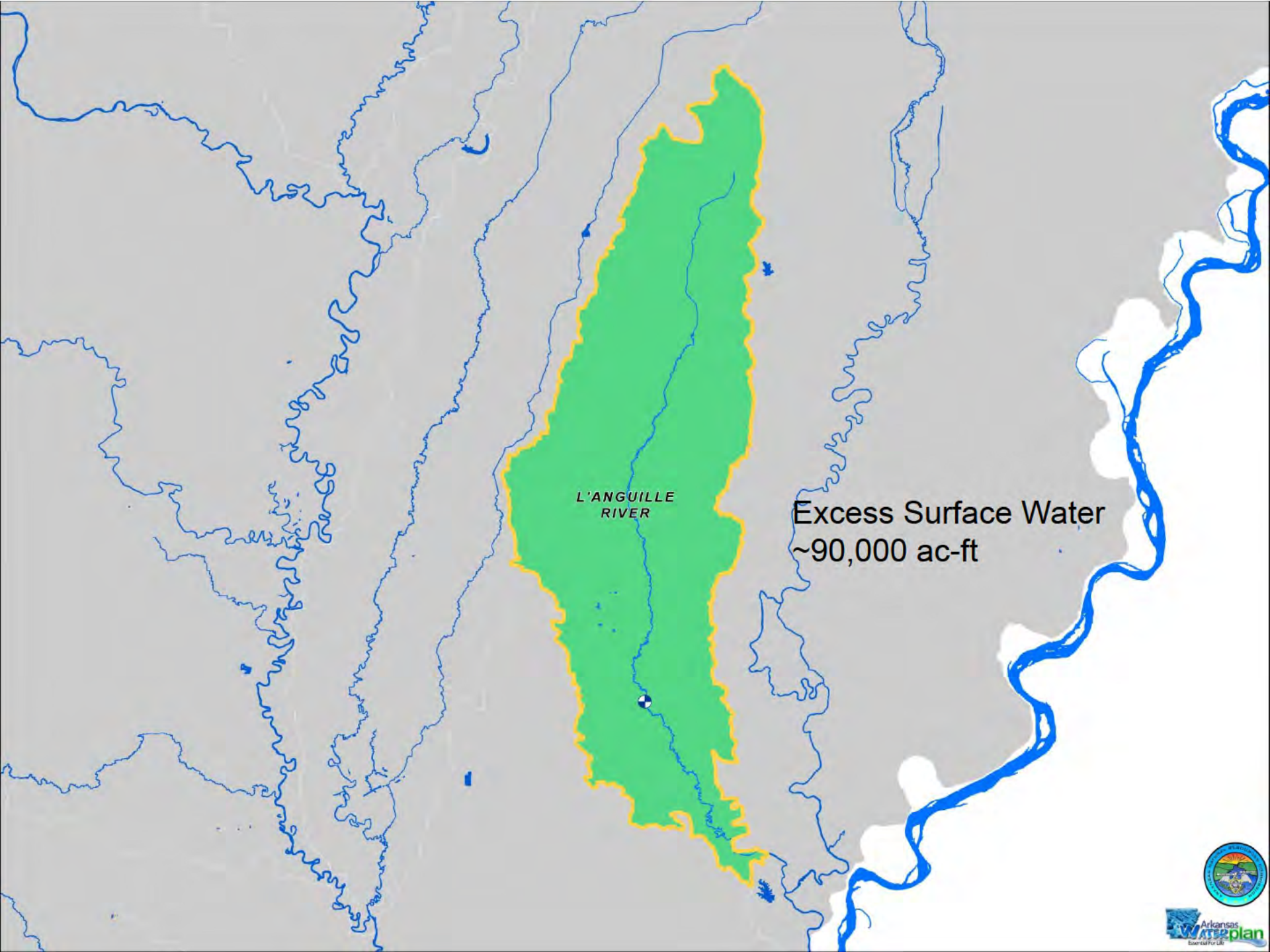
DEVIL'S FORK LITTLE RED RIVER

SOUTH FORK LITTLE RED RIVER

CACHE RIVER

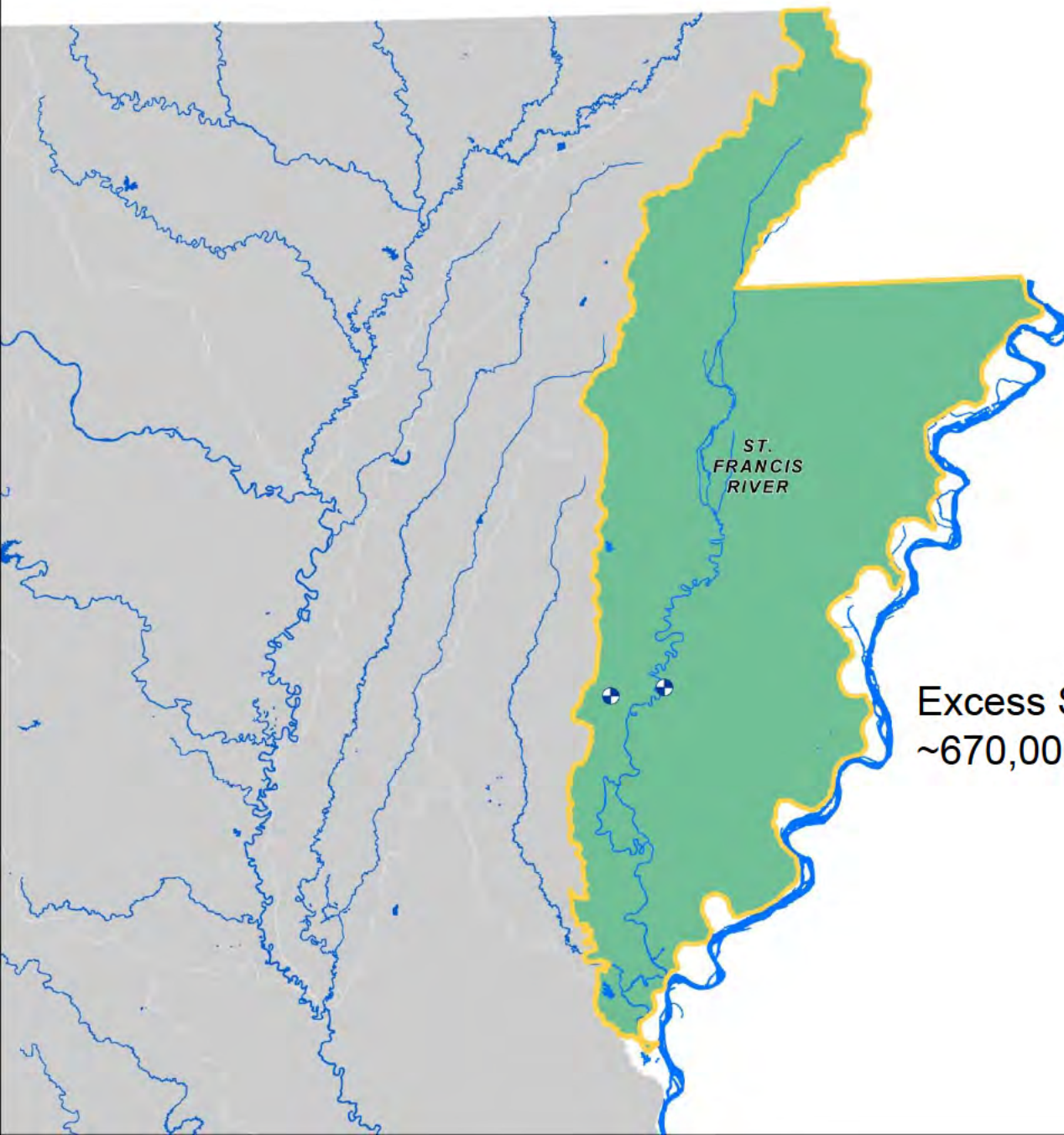
Excess Surface Water
~2.20 million ac-ft

LOWER WHITE RIVER

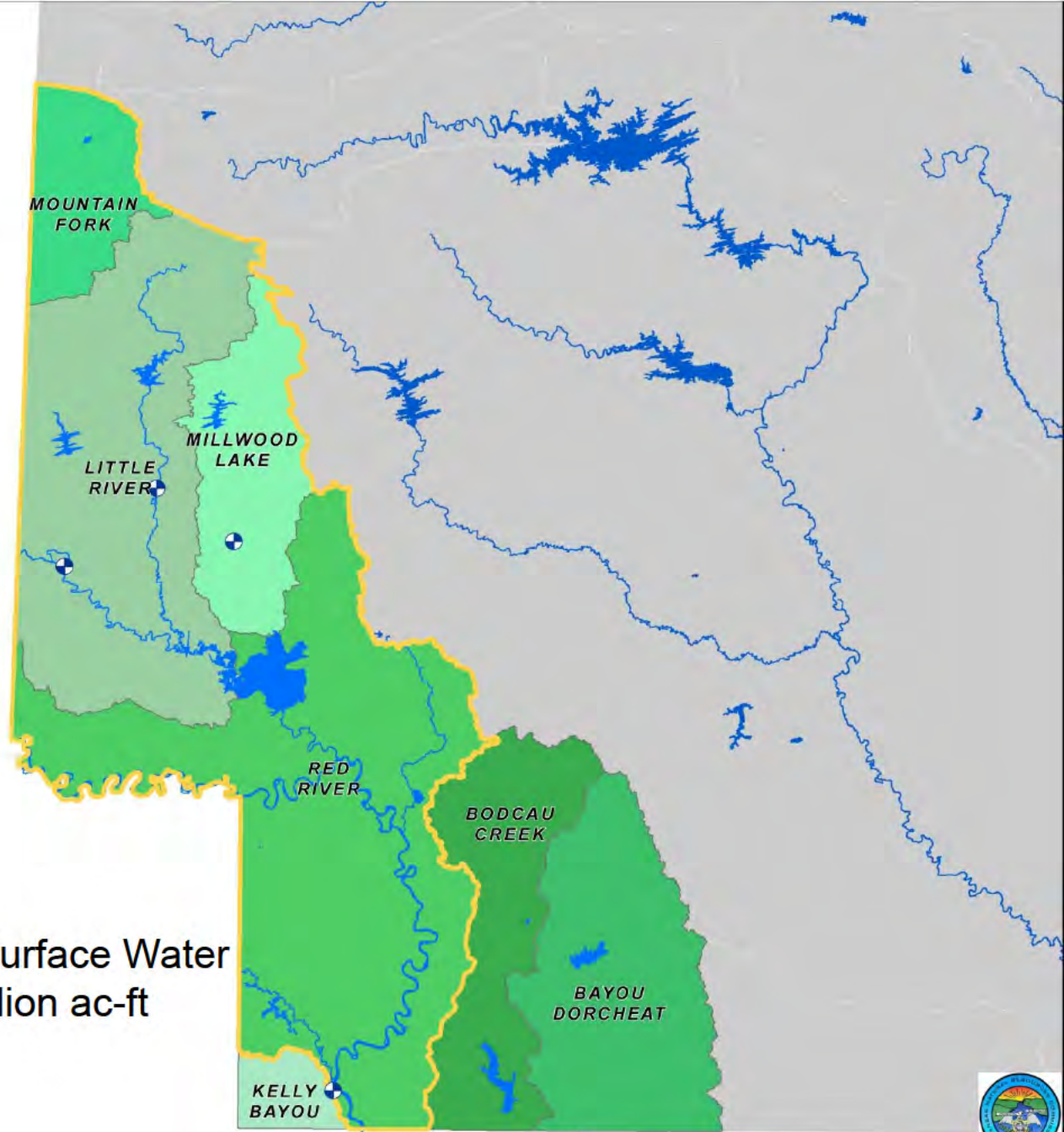


L'ANGUILLE
RIVER

Excess Surface Water
~90,000 ac-ft

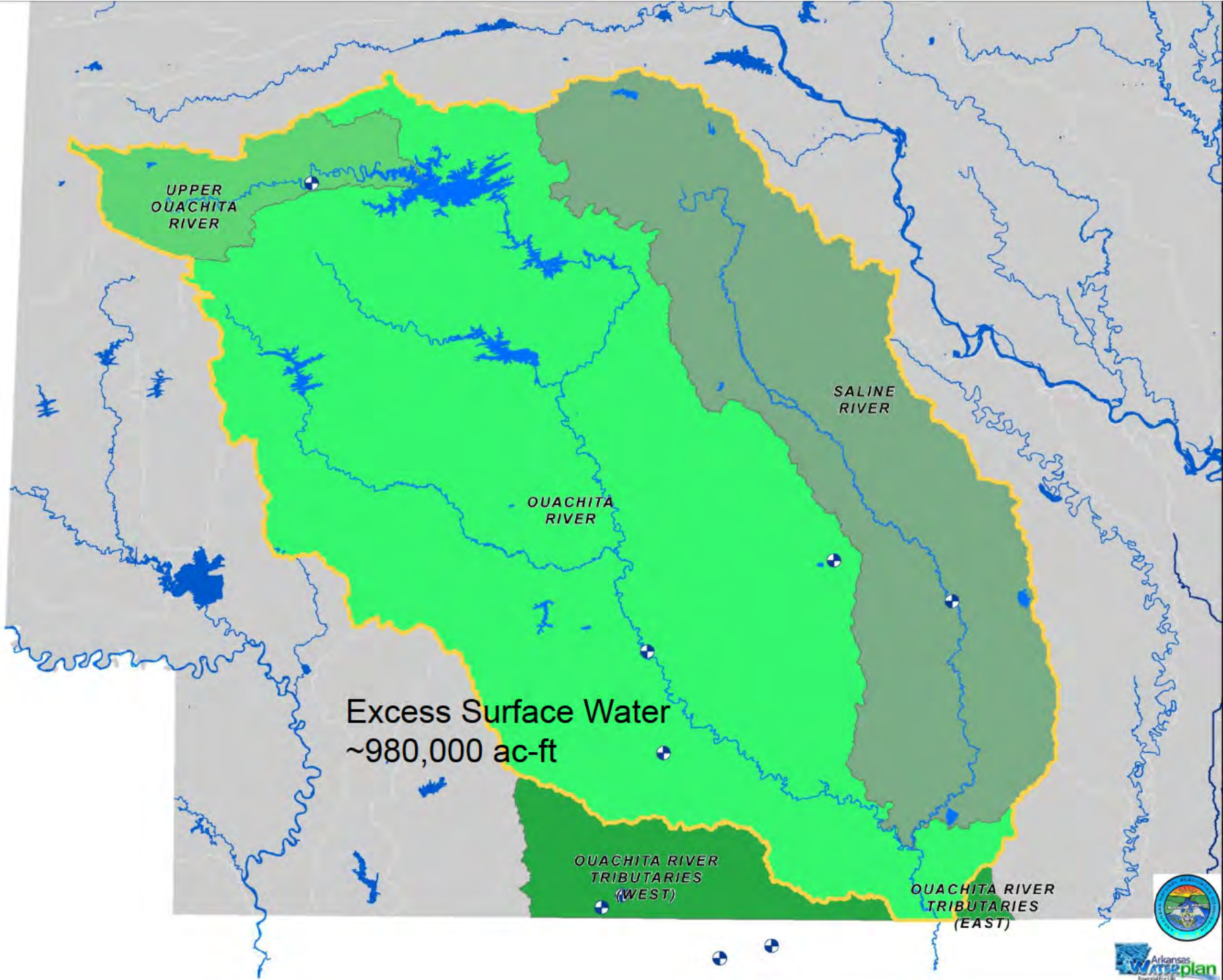


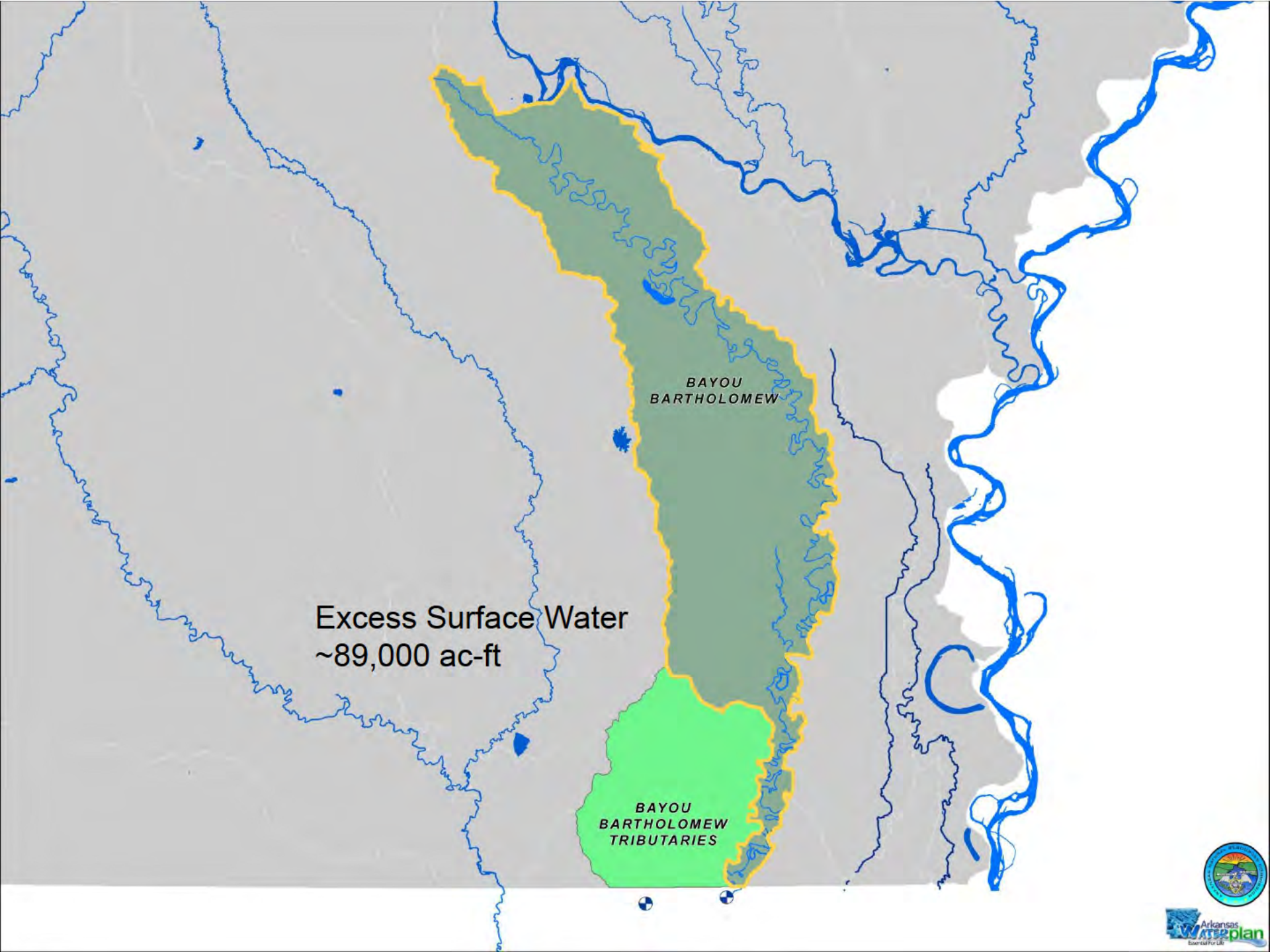
Excess Surface Water
~670,000 ac-ft



Excess Surface Water
~1.14 million ac-ft



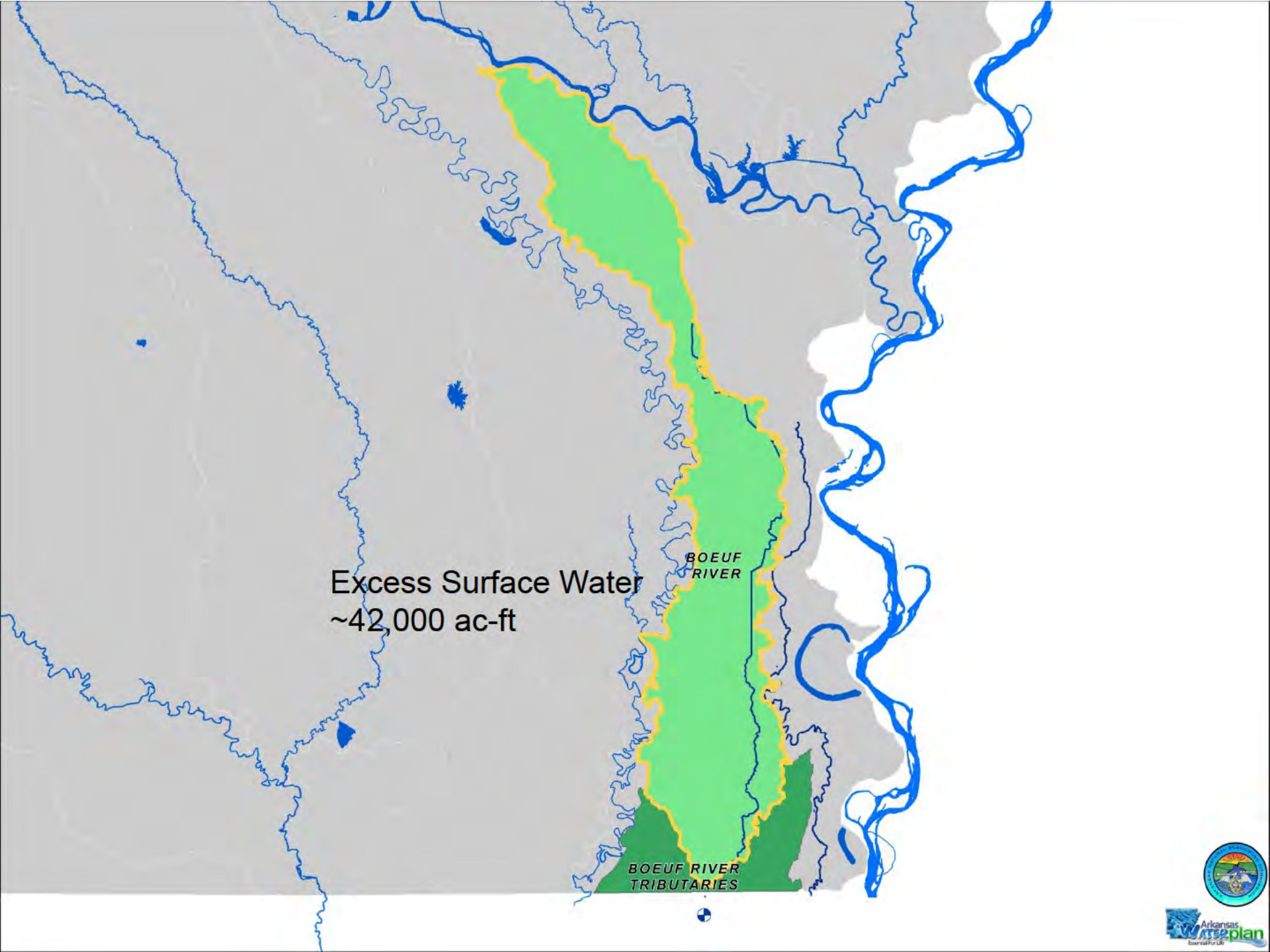




Excess Surface Water
~89,000 ac-ft

BAYOU
BARTHOLOMEW

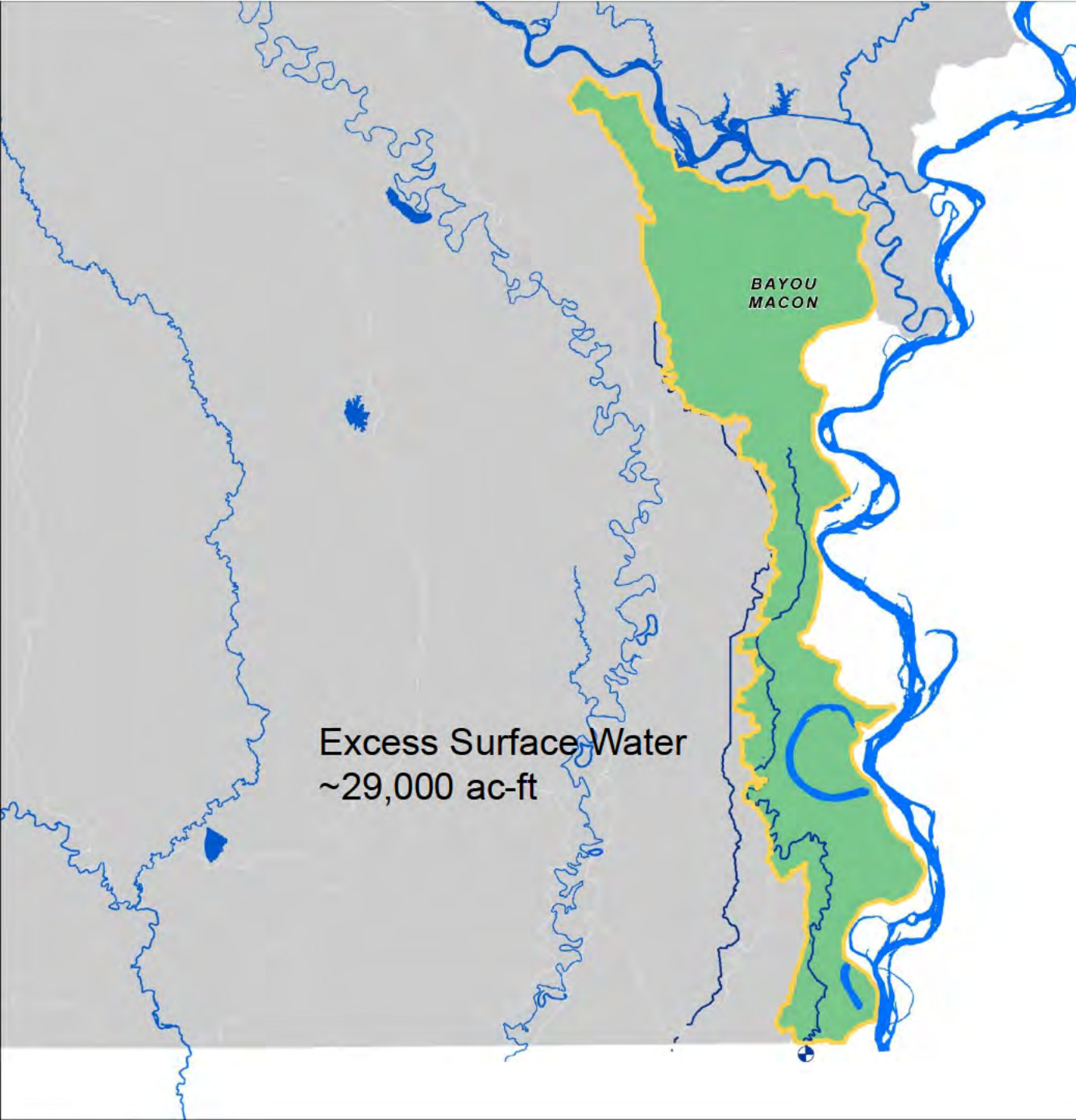
BAYOU
BARTHOLOMEW
TRIBUTARIES



Excess Surface Water
~42,000 ac-ft

BOEUF
RIVER

BOEUF RIVER
TRIBUTARIES



BAYOU
MACON

Excess Surface Water
~29,000 ac-ft

USACE Project Information in Plan

- Summary of USACE projects
- Reservoirs authorized for Water Supply
- Plan will include summary of general process required for reallocation

